

CENTRAL INTERCEPTOR BULLETIN

PS23 site, 39 Frederick Street and Hoskins Avenue, Hillsborough

We're building the Central Interceptor, a super-sized wastewater tunnel to reduce overflows, creating a better environment for you to enjoy.

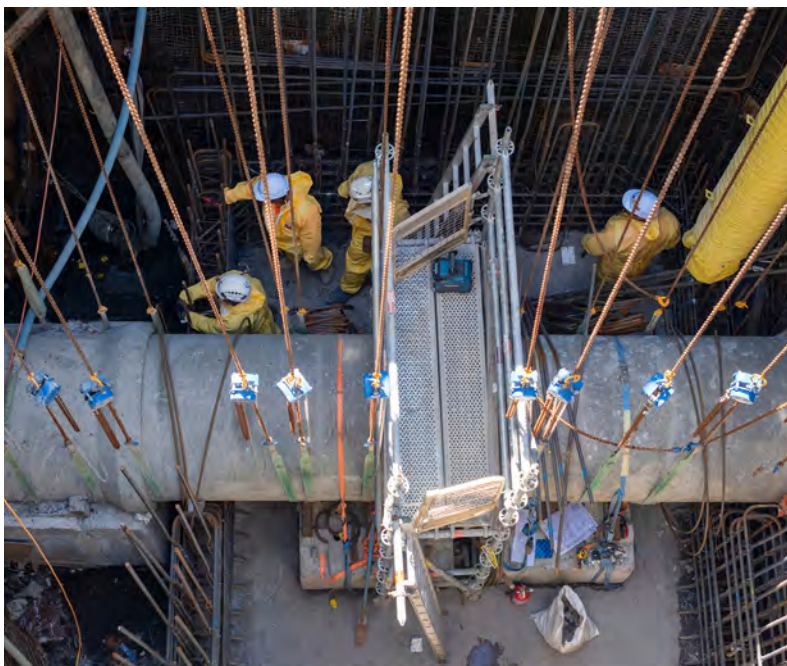
Site update

A lot has happened at our sites in Hillsborough since our Tunnel Boring Machine (TBM) Hiwa-i-te-Rangi tunnelled past almost a year ago.

We had paused main site works while we waited for the tunnel connections and the emergency evacuation point to be finished. Now these are completed we are back on site in full force.

Once we recommenced on site, we began diversion chamber works next to the main shaft. This chamber will divert the existing Onehunga branch sewer into the new Central Interceptor when completed. The chamber is 3m wide 7m long and 13m deep.

The excavation of this chamber was a complex operation as the existing Onehunga branch sewer runs right through it. The branch sewer must remain operational until the southern section of the new Central Interceptor tunnel is completed at the end of 2024. Our chamber is deeper than the existing sewer line so we have had to suspend it so that it can remain operational until it is disconnected.

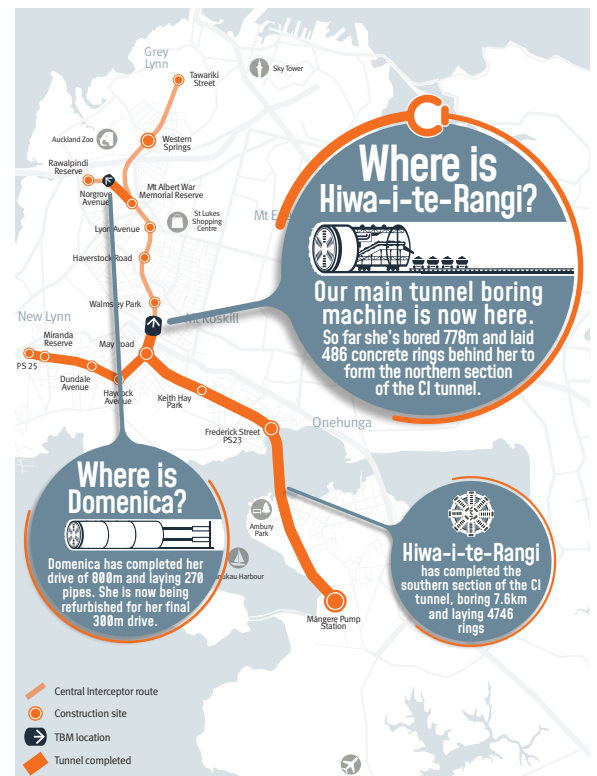


Onehunga branch sewer suspended while we work

Tunnel progress

Check out our website which now has a weekly update of the TBM's progress. <https://www.watercare.co.nz/Central-interceptor/Constructing-the-Central-Interceptor>.

You can also follow us on Facebook, or Instagram.



TELL US HOW YOU REALLY FEEL

Take the online survey at: www.watercare.co.nz/aucklandprojects or scan the QR code



Update on Hoskins Ave

There were unexpected delays to the commencement of Hoskins Avenue works. After some redesign of the tunnel alignment to accommodate previously unknown underground services, work has now restarted. The contractor has made great progress and we should have most of the works completed and several sections of the road resurfaced by Christmas.

Two short sections of pipe will be laid in the new year, then we will reinstate Taylor's Bay Reserve and that will be the works done. Once this is completed, we will have installed ten new manholes and installed 300 metres of new pipe.

Some 200 metres of it was laid in the open trench and the 100 metres was installed in Hoskins Avenue using the Horizontal Directional Drill Unit (HDD). HDD is when a small tunnel is drilled under the road, and the pipe is pulled back through the small drilled underground tunnel.

Thank you for your understanding and support while we carry out this essential work which will benefit Auckland.



Sections of the GRP liner on site



Top of the liner above the shaft



Aerial view of PS23



A look inside the tunnel that runs under PS23

Quieter for the holiday period

Our sites will be much quieter over the holiday period as our staff take a well-deserved break to celebrate with friends and family. The shutdown period will be from the 22nd of December 2023 until 7th of January 2024.

You may continue to see staff on site. They will be carrying out essential work and routine security checks.

The Central Interceptor team wishes you a safe and restful festive season and a happy new year.



Any questions?

For up to date information please see our website:

www.centralinterceptor.co.nz

You can also email us at:

ciproject@ga-jv.com

Or phone:

0800 GAJV 02 (0800425802)

Follow us:

[@gajv_nz](https://www.instagram.com/gajv_nz)

[@GAJV](https://www.linkedin.com/company/gajv)



We encourage you to receive these updates electronically - send us your email, your current mailing address and quote "Sign me up: PS23 site bulletin" to ciproject@water.co.nz